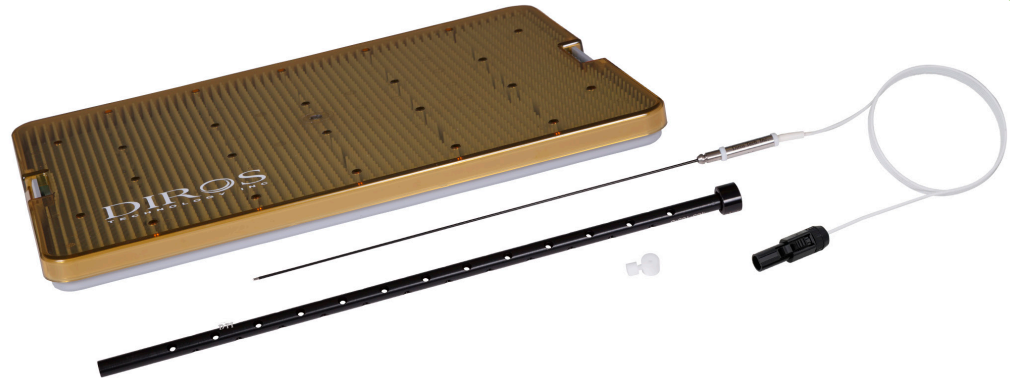
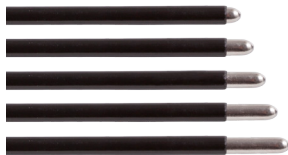


# RF INTRACRANIAL TASKER ELECTRODES

TIPS



The Diros OWL® Tasker Lesion Electrodes are designed to perform stereotactic ablative procedures in the brain. The Tasker Lesion Electrodes can be used for stimulation and lesioning and are available in a variety of different gauges, shaft lengths and bare tip lengths. Re-useable and disposable options available.

Diros OWL® Tasker Lesion Electrodes are offered in the following configurations:

GAUGE	DIAMETER (MM)	DIAMETER WITH INSULATION (MM)	SHAFT LENGTHS (MM)	BARE TIP LENGTH (MM)
21 Ga.	0.81	0.96	190 to 300	1 to 5
20 Ga.	0.9	1.05	190 to 300	1 to 5
19 Ga.	1.07	1.22	190 to 300	1 to 5
18 Ga.	1.27	1.42	190 to 300	2 to 5
17 Ga.	1.47	1.62	190 to 300	2 to 5
16 Ga.	1.65	1.80	190 to 300	3 to 5

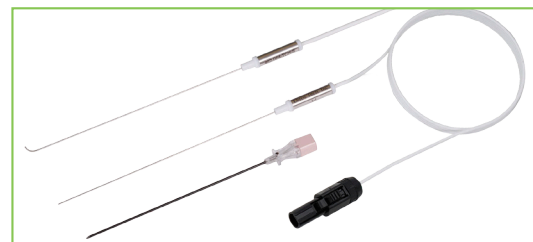
## GASSERIAN GANGLION



TIP

Gasserian Ganglion RF Probe and RF Cannulae are designed to perform RF lesions for treatment of trigeminal neuralgia. Re-useable and disposable options available.

## GASSERIAN GANGLION STRAIGHT & CURVED



TIPS

Gasserian Ganglion Straight and Curved RF Probes and fully insulated RF Cannulae are designed to perform RF lesions for treatment of trigeminal neuralgia. The Curved RF Probe allows for an off-axis RF lesion to be achieved. Re-useable and disposable options available.

**DIROS**  
TECHNOLOGY INC

DIROSTECH.COM

Manufactured By: **DIROS TECHNOLOGY INC.**

📍 120 Gibson Drive, Markham, ON, Canada L3R 2Z3

☎ (905) 415-3440

📠 (905) 415-0667

✉ sales@dirostech.com

Distributed By:



**Trans-Pacific Healthcare**  
1A Chesterfield Avenue  
Malvern, VIC 3144

Phone: 03-9824-8888  
Fax: 03-9824-4444  
Web: www.tphc.com.au  
Email: office@tphc.com.au





## RF DREZ

The Diros OWL® DREZ Electrode is designed to perform RF lesions in the Dorsal Root Entry Zone for the treatment of pain.

The DREZ Electrode is 27 gauge and has a bare tip of 2mm length with an embedded temperature sensor.

TIP 

## RF CORDOTOMY

The Diros OWL® Cordotomy Electrode is designed to perform RF lesions in the spinothalamic tract for the treatment of intractable cancer pain. The Cordotomy Electrode is inserted into the CFS space surrounding the spinal cord through a 21 or 18 gauge introducer cannula.

The Cordotomy Electrode is offered in 27 or 25 gauge with a bare tip of 2mm length and an embedded temperature sensor. Re-useable and disposable options available.

TIP 



DIROS PART NO.	DESCRIPTION
466-PB3-S	AUTOCLAVE CASE
466-PB4-S	LARGE AUTOCLAVE CASE TO BE USED WITH RF INTRACRANIAL TASKER ELECTRODES

466-PB3-S

